

	PART - GROUP CHANGE NOTIFICATION			Bulletin no	Rev no	Date
	Copy to	MUSA ALTIPARMAK SEMA KARACA		CMI_2022_01	0	1.01.2022
	Approved by	YUNUS EMRE AYDOĞDU				

TECHNICAL EXPLANATION OF THE MODIFICATION		Technical Bulletin No
Subject	Detergent box and Hose gr change	
Key Words	hose-detergent box	

Problem description / Reason of the modification:

It has been observed that the foam overflowing from the heater channel hole reached the foil on the motor board and the mains cable. It has been understood that in order to solve this problem, the foam overflowing from the heater channel should be directed into the detergent box and evacuated.

Affected period:

Before 01.01.2022

Application Date:

1.01.2022

Content of the modification (Which items are modified?):

**Additional 1 piece foam hose assembly and 2 pieces hose clamps.
A new type, which is the third hose inlet, has been added to the detergent box cover part.
to this newly added type, the types of the upper groups have also been changed.**

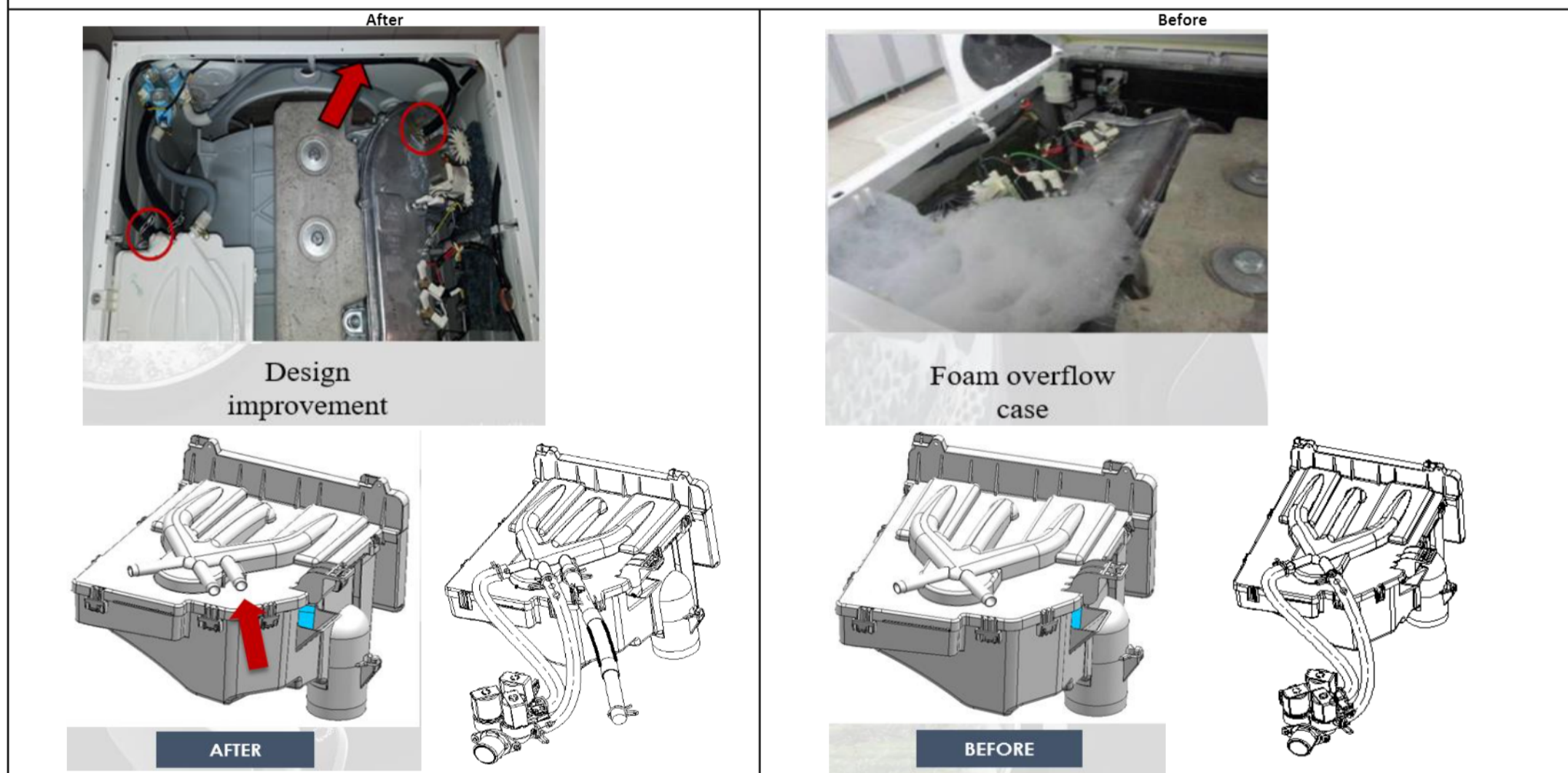
Due

APPLICATION IN THE FIELD:

Needed equipment:

How will be the application of the modification in the field?:

When foam overflow is seen in the machine, the specified materials should be changed. (Detergent box and hose gr)



INFORMATION ABOUT THE PART CHANGES

Ser. Ref	New part(s) / Group(s)				Ser. Ref	Old part(s) / Group(s)			
	Stock number	Part / group name	#	Code		Stock number	Part / group name	#	Code
146	2478800600	DETERGENT DIPENSER ASSEMBLY (NAT PP)	1	C2	146	2478800100	DETERGENT DIPENSER ASSEMBLY (NAT PP)	1	C2
146	2478800400	DETERGENT DIPENSER ASSEMBLY (ECO PP)	1	C2	146	2478800200	DETERGENT DIPENSER ASSEMBLY (ECO PP)	1	C2
146	2478800500	DETERGENT DIPENSER ASSEMBLY (ABD)	1	C2	146	2478800300	DETERGENT DIPENSER ASSEMBLY (ABD)	1	C2
1643	2499700100	HOSE ASSEMBLY (L= 82 cm)	1	C2					

New Part(s) / Group(s)

Parts are added to BOM of the product.

Parts will not be added to BOM, It is only for service.

Part datas are completed by Production Planning department.

CODE EXPLANATION :

A-Old stocks can be used; Old & new parts are fully interchangeable

B-Old stocks can be used; Old parts are interchangeable with old productions & new parts are interchangeable with new productions

C-Old stocks can not be used. New parts are interchangeable with old & new productions

D-Old stocks can not be used. New parts are interchangeable with new productions

E-Old stocks can be used in old productions. New parts are interchangeable with old & new productions

1-Performance / 2-Production improvement / 3-Safety / 4-Material or dimension change / 5-Additional part / 6-Part cancellation / 7-Alternative use

RELATED PRODUCTS

No	Modification Date	Brand	Model	Started from	Finished at	Signature

Sensitivity: Public